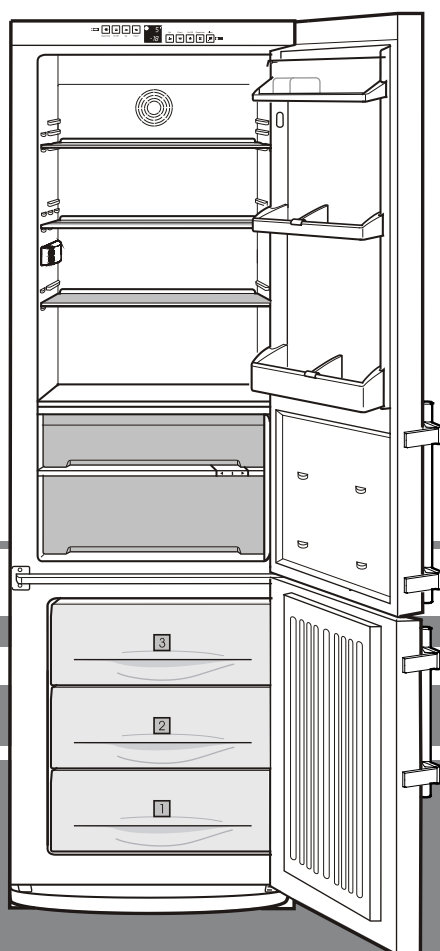


# Operating instructions

for combined refrigerator-freezers with BioFresh compartment

Page 12

GB



**7081 187-00**

CBesf 210

**LIEBHERR**

## Disposal notes

The packaging is made of recyclable materials.

- Corrugated board/board
- EPS moulded parts
- Polythene sheets
- Polypropylene straps

- **Keep packaging materials away from children - polythene sheets and bags can cause suffocation!**
- Please return the packaging to an official collection point.

**Your old appliance:** This contains some reusable materials and should be disposed of properly - not simply with unsorted household refuse.



- Discarded appliances should be disabled: Remove the plug, cut through the connection cable and render the catch unusable so that children cannot become trapped inside.
- Ensure that the refrigerant circuit is not damaged when the appliance that is no longer needed is taken away for disposal.
- Details of the refrigerant can be found on the type plate.
- Appliances which are no longer needed must be disposed of in a professional and appropriate way, in accordance with the current local regulations and laws.

## Safety regulations

- The appliance is set to operate within specific ambient temperature limits according to its climate rating. These temperature limits should not be exceeded. The correct climate rating for your appliance is indicated on the type plate. This is explained as follows:

Climate class	designed for ambient temperatures of
---------------	--------------------------------------

SN	+10 °C to +32 °C
N	+16 °C to +32 °C
ST	+16 °C to +38 °C
T	+16 °C to +43 °C

The appliance complies with the relevant safety regulations and EC directives 2004/108/EC and 2006/95/EC.

## Range of appliance use

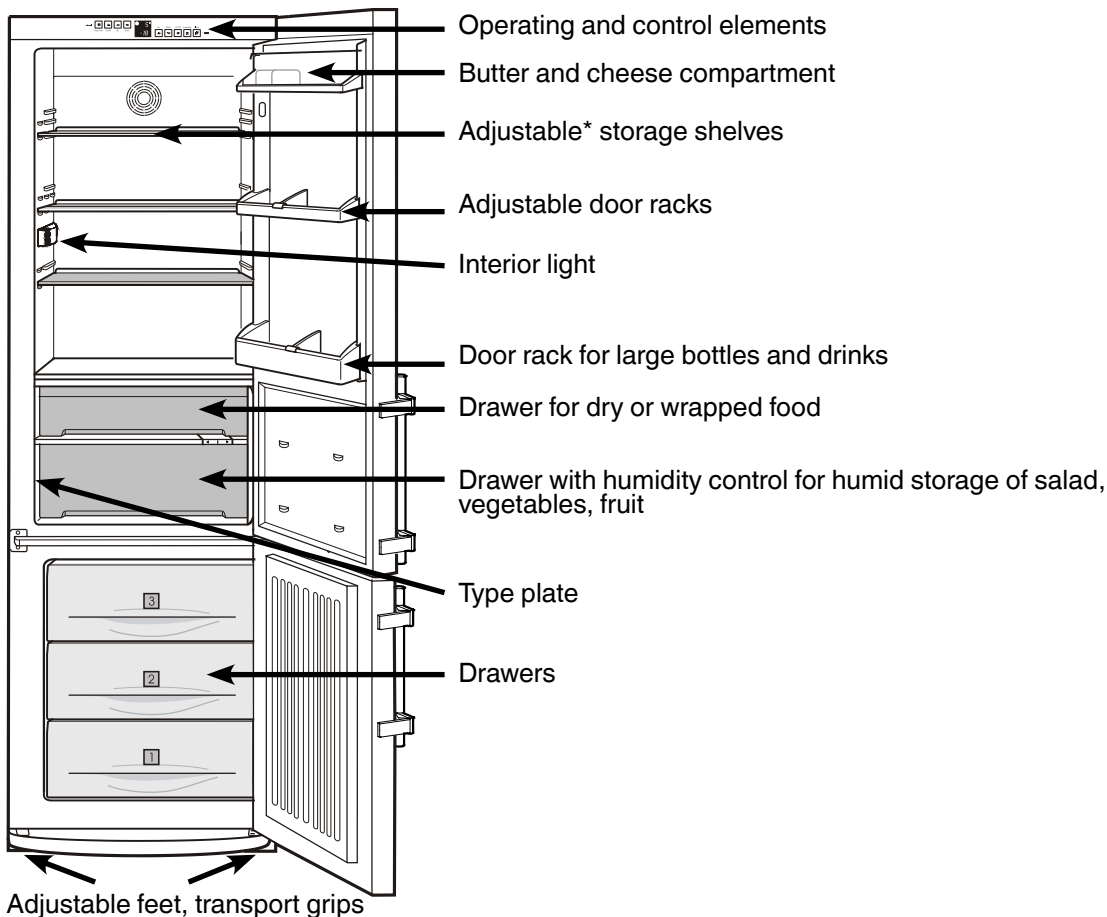
The appliance is suited only for cooling food. In the case of commercial food cooling, the pertinent statutory regulations have to be observed.

The appliance is not suited for storing and cooling pharmaceuticals, blood plasma, laboratory preparations or similar substances and products subject to the Medical Devices Directive 2007/47/EC.

Any misuse of the appliance may result in damage to or spoilage of the stored goods.

Furthermore, the appliance is unsuited for use in areas exposed to an explosion hazard.

## Description of appliance and equipment



\* Depending on model and options

## Safety instructions and warnings

- To prevent injury or damage to the unit, the appliance should only be transported wrapped and set up by two people.
- The refrigerant R 600a is environmentally friendly but flammable.
- Do not damage the refrigerant circuit pipes. Splashes of refrigerant can harm your eyes or ignite.
- If refrigerant escapes, remove all naked flames or sources of ignition in the vicinity of the leak, disconnect the appliance from the mains and ventilate the area well.
- In the event that the appliance is damaged, contact the supplier immediately before connecting to the mains.
- To guarantee safe operation, ensure that the appliance is set up and connected as described in these operating instructions.
- In the event of a fault, disconnect appliance from mains: pull out the plug (do not pull on connection cable) or trip or turn out fuse.
- **Any repairs and work on the appliance should only be carried out by the customer service department, as unauthorised work could prove highly dangerous for the user.** The same applies to changing the mains power cable.
- Do not store any explosive materials or spray cans with flammable propellants in the appliance, such as butane, propane, pentane etc. Electrical components might cause leaking gas to ignite. You can identify such sprays by the printed contents or a flame symbol.
- Only store high-percentage alcohol in tightly sealed, upright containers.
- Do not allow naked flames or ignition sources to enter the appliance.
- Do not use electrical appliances inside the appliance (e.g. steam cleaners, heaters).
- Do not stand on the plinth, drawers or doors or use them to support anything else.
- This appliance is not intended for use by persons (including children) with reduced physical, sensory or mental capabilities or lack of experience and knowledge unless they have been given initial supervision or instruction concerning use of the appliance by a person responsible for their safety. Children should be supervised to ensure that they do not play with the appliance.
- Avoid prolonged skin contact with cold surfaces or chilled/frozen food. This could cause pain, numbness and frostbite. In the case of prolonged skin contact, protective measures should be taken, e.g. gloves should be worn.
- Do not eat ice-cream, particularly ice lollies or ice-cubes, immediately after taking them from the freezer compartment as there is a risk of "burning" because of the very cold temperatures.
- Do not consume food which has been stored for too long, as it could cause food poisoning.
- The appliance is designed for use in enclosed areas. Do not operate the appliance outdoors or in areas where it is exposed to splash water or damp conditions.

## Setting up

- When setting up/fitting ensure that the refrigerant circuit pipes are not damaged.
- Standard EN 378 specifies that the room in which you install your appliance must have a volume of 1 m<sup>3</sup> per 8 g of R 600a refrigerant used in the appliance, so as to avoid the formation of inflammable gas/air mixtures in the room where the appliance is located in the event of a leak in the refrigerant circuit. The quantity of refrigerant is given on the type plate in the interior of the appliance.
- Always position the appliance directly up against the wall.
- Avoid positioning in direct sunlight or next to an oven, radiator or similar, in damp locations or near spraying water.
- Once in position, use the 10 spanner provided to adjust the feet so that the appliance is level and does not wobble.
- **The ventilation grilles should not be obstructed. Always ensure that there is good ventilation and that the outward flowing air is able to escape.**  
Condensation may form on the outside of the refrigerator/freezer during periods of high humidity. Constant ventilation of the installation site is recommended.  
More information can be found in the installation and modification instructions.
- Do not place heat-emitting appliances, e.g. microwave oven, toaster, etc., on top of the refrigerator or freezer.
- In order to avoid the risk of fire, do not place any burning candles, lamps or other objects with open flames on the refrigerator/freezer.
- Remove all transportation safety components:
  - Remove sticky tape or spacers\* from shelves and insert shelves in the required position.
  - Remove all protective film: from the decorative trims, front walls and side walls\*.

## Connecting to the mains

### Power supply (AC) and voltage

- at the operating point must comply with the details on the type plate, which is located inside the appliance on the left, fig. **A**.
- **Connect the appliance with a properly earthed fused plug and socket only.**
  - The socket must be fused with a 10 A fuse or higher, it must be away from the rear of the appliance and must be easily accessible.
  - Do **not** connect the appliance to the supply with other equipment using an extension cable - risk of overheating.
  - When removing the mains cable from the back of the appliance, remove the  **cable holder** so as to avoid vibration noise.

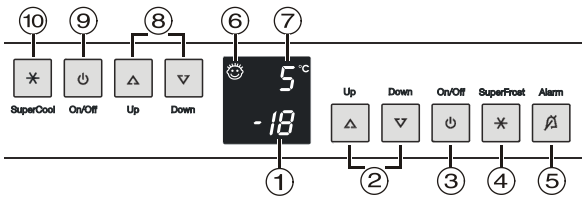
## Saving energy

- Always ensure good ventilation. Do not cover ventilation openings or grille.
- Always keep fan louvres clear.
- Do not place appliance in areas of direct sunlight or next to a stove, heater or similar object.
- The energy consumption depends on the installation conditions, e.g. the ambient temperature.
- Keep the time the appliance is open to a minimum.
- Store food logically.
- Ensure that all food is well packed and covered for storage. This will prevent frost from forming.
- First cool warm food to room temperature before storing it.
- Defrost frozen food in the refrigerator.
- If there is a thick layer of frost in the appliance: defrost the appliance.
- Empty and switch off refrigerating unit for longer vacation periods.

Accumulated dust increases the energy consumption:

- Once a year, dust the refrigerating unit together with the metal grille of the heat exchanger at the back of the appliance.

## Control elements



You are advised to clean the appliance before switching it on for the first time (see "Cleaning").

Switch on the appliance approx. 2 hours before loading it with frozen food for the first time. Do not load with frozen food until the temperature shows at least -18°C.

## Switching the appliance on and off

Pressing the main on/off switch ③ always switches the entire appliance, both the refrigerator and the freezer compartment, on or off.

- **Switching on:** Press the on/off buttons ③ or ⑨ so that the temperature displays light up or flash.
  - **Refrigerator with BioFresh compartment:** The interior light will light up when the door is open.
  - **Freezer compartment:** When putting the appliance into operation and when it is warm, **lines** are shown in the freezer compartment display until a temperature less than 0 °C is reached.
- **Switching off:** Press the main on/off switch ③ for about one second, so that the temperature displays go out.
- If you only want to **switch off the refrigerator and BioFresh compartment** (keeping the freezer compartment switched on; useful when you go on holiday, for example), press the **on/off switch ⑨**. The **refrigerator** temperature display ⑦ and the interior light will go out. The **freezer** temperature display ① must remain on.

## Setting the temperature

The appliance is set as standard for normal operation mode, a temperature of +5 °C is recommended for the refrigerator compartment and -18 °C for the freezer compartment.

**Lower temperature/colder:** Press the **Down**-setting button, left for refrigerator compartment: ⑧, right for freezer compartment: ②.

**Increase temperature/warmer:** Press the **Up**-setting button.

- While you are entering the temperature, the **set temperature will flash** on the display.
- When you press the temperature setting buttons for the first time, the **most recent setting** (known as the "**reference setting**") is displayed.
- You can change the settings in increments of 1°C by briefly pressing the buttons again. If the buttons are held down the temperature setting will change faster.
- Approximately 5 seconds after the button has been released, the display will automatically show the **actual** freezing or cooling temperature (known as the "**actual setting**").

You can change the temperatures

- **in the refrigerator:** between 9 °C and 4 °C, and
  - **in the freezer:** between -16 °C and -26 °C.
- Whether you can obtain the lowest temperature depends on where the appliance is positioned (if it is located in an area with a high ambient temperature it will not reach the lowest temperature).
- The temperature in the **BioFresh compartment** is controlled automatically, between 0 and 3°C. If you require a higher or lower temperature, e.g. for storing fish, you can alter the temperature setting in the BioFresh compartment. For more information on this, please see the section "Additional functions".

## Temperature display

In normal operation, the following settings will be displayed:

- the **average refrigerator temperature** in display ⑦ and
- the **warmest frozen food temperature** in display ①.

**The display will flash:**

- if you change the temperature or
- if the temperature rises by several degrees, indicating cold loss, e.g. if you place fresh, "warm" food in the freezer or if you remove or re-pack frozen food the temperature may rise for a short time due to warm air flowing into the freezer. Once you have finished loading or re-packing, the electronics will automatically re-set the temperature to the most recent setting. Short-term rises in temperature will not affect the frozen food.
- If "F 1" to "F 5" appears in the display, the appliance has a fault. Consult the customer service department indicating the fault number displayed.

## Audible warning signal

The audible warning signal helps to protect frozen food and to save energy.

- **The audible warning device is switched off** by pressing the audible warning on/off button ⑤.
- It switches off automatically as soon as the temperature is low enough.

It always sounds

- if the freezer temperature is not low enough (dependent on the temperature setting). **The temperature display flashes** at the same time.
- if warm, fresh food has been placed in the freezer.
- if too much warm air from the outside has entered when re-arranging or removing frozen food.

The temperature display will continue to **flash** until the cause of the alarm has been rectified.

## SuperCooling

The SuperCooling button switches the refrigerator compartment to maximum cooling.

It is recommended particularly if you wish to cool **large** quantities of food, drinks, freshly baked cakes or meals rapidly.

- **Switch on:** Briefly press SuperCooling button ⑩ so that it is lit. The refrigerator temperature will drop to its lowest value.
- NB:** "SuperCooling" consumes slightly more energy. After approx. 6 hours, however, the refrigerator switches back **automatically** to normal energy-saving operation. If required, the "SuperCooling" function can be switched off earlier.
- **Switch off:** press again briefly, so that the button is unlit.

## Power failure- / FrostControl-display

If appears in the display  $nR$ , this means that: the freezer temperature has risen too **high** during the last few hours or days due to a power failure.



- If you press the audible warning on/off button 5 whilst the display is reading  $nR$ , the **highest** temperature registered during the power failure will be displayed. Check the quality of the food and its suitability for consumption in case it has become too warm or even defrosted.
  - The highest temperature will appear for approx. 1 minute. After that, the actual temperature in the freezer will re-appear. The display can be switched off by repeatedly pressing the audible warning on/off button.
- Once the power is re-instated, the appliance will continue to operate at the most recent temperature setting.

## Additional functions

In set-up mode you can set the **child-proof lock**, adjust the **brightness of the display\*** and set the **temperature** in the **BioFresh compartment** slightly lower or higher.

### Activating set-up mode:

- Press SuperFrost button for approx. 5 secs - the SuperFrost button flashes - the display shows **c** for child-proof lock. Note: the value to be altered flashes.

- Select the required function by pressing the Up/Down button:

**c** = child-proof lock,  
**h** = brightness or  
**b** = BioFresh temperature.

- Now select/acknowledge function by pressing SuperFrost button briefly:

- For **c** = child-proof lock, press the Up/Down button to select **c1** = child-proof lock **on** or **c0** = child-proof lock **off** and acknowledge with the SuperFrost button.



When the symbol  $\text{Ⓢ}$  is lit, the child-proof lock is activated.

- For **h** = brightness, press Up/Down button to select **h1** = minimum to **h5** = maximum brightness and acknowledge with the SuperFrost button.



- With **b** = BioFresh temperature, press the Up/Down button to select from **b1** = lowest to **b9** = highest setting and confirm with the SuperFrost button.



The altered BioFresh temperature adjusts slowly to the new value.

NB: **b5** = factory setting. By decreasing the temperature, **b4** to **b1**, minus temperatures can be reached and the food in the BioFresh compartment will freeze slightly.

### Exit set-up mode:

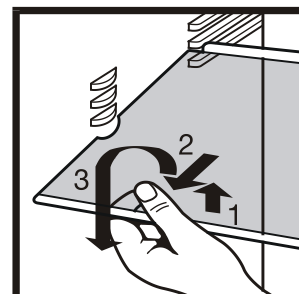
- To exit the set-up mode, press the On/Off button; after 2 min. the electronic system switches over automatically.
- The normal operating mode is activated again.

## Notes on cooling

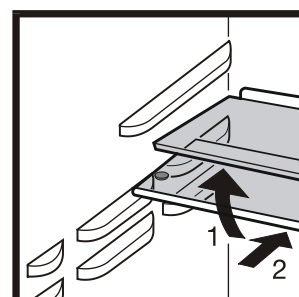
- Store food in such a way that the air can circulate well, i.e. do not store goods too close together. Do not cover the fan slits\* on the rear wall - otherwise the refrigerating capacity will be impaired!
- Food which gives off or absorbs odours and flavours, and liquids should always be stored covered or in closed containers.

## Equipment

You can re-arrange the storage shelves as required. Lift up shelves at the front, pull them out halfway and remove by tilting upwards or downwards.

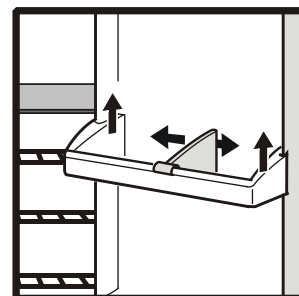


- If you require space for large bottles and containers, slide one half of the glass shelf to the back.



### Repositioning the door racks

- Lift door rack vertically, lift out to the front and re-insert at a different height, following these steps in the reverse order.
- By shifting the bottle holder you can protect the bottles from falling over when opening or closing the door.



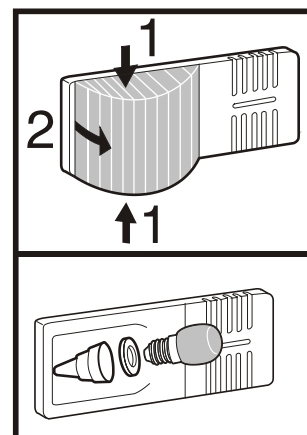
## Interior light

**Bulb data:** 25 W (never use a bulb rated at more than 25 W). The voltage should agree with the details on the type plate. Socket: E 14.

Replacing the bulb:

**Pull out the mains plug or remove/unscrew the fuse.**

- Press the light cover together at the sides **1**, lift out and unclip at the back **2**.
- Replace the bulb. When inserting the new bulb, make sure the seal is correctly positioned in the socket.
- Clip the back end of the cover in and clip the sides into place.



## BioFresh compartment

The BioFresh compartment enables you to keep a range of **fresh food** fresh for up to three times as long as you would in a standard refrigerator, thus making your stocks last longer. The automatically controlled storage temperature, which is kept constantly between 0 and 3°C, and the resultant humidity provide the ideal storage conditions for different types of food.

### The top drawer

is suitable for storing **dry or wrapped** food (e.g. dairy products, meat, fish, sausages). The storage climate in this drawer is relatively **dry**.

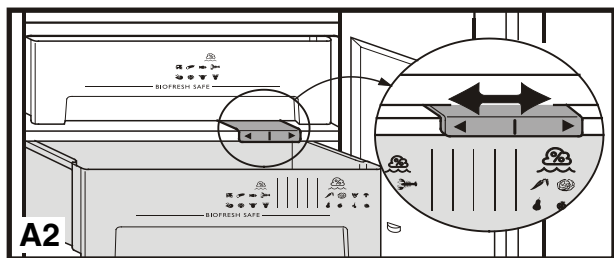
### The large, adjustable drawer

can be set to "humid" for storing unwrapped salads, vegetables and fruit. When the drawer is full, the climate will be "dew-fresh", with approximately 90 % humidity.

You can set the humidity in this drawer to dry or humid as required.

#### Humidity selection, fig. A2:

- **"dry" setting: small humidity symbol** - slide control to left. Insert food that is suitable for being stored in a dry climate.
- **"humid" setting: high relative humidity of max. 90 %, large humidity symbol** - slide control to right. This setting is suitable for storing unwrapped food with a high moisture content, such as fresh lettuce.



#### Notes:

- The humidity in the compartment depends on the moisture content of the food in it and the frequency with which the compartment is opened.
- When buying food, check that it is fresh - the fresher the product and the higher its quality, the longer it will keep.
- Unwrapped animal and vegetable foods should be stored separately in the drawers. If there is not enough space for them to be stored separately, make sure that they are wrapped! Do not allow different types of meat to come into contact with one another but keep them packaged separately so as to avoid premature bacterial spoilage.
- Please note that protein-rich food spoils more quickly, i.e. crustaceans and shellfish spoil faster than fish, and fish faster than meat.
- Remove food from the drawers some time before consumption. Enjoyment will be enhanced in this way as the aroma and flavour develop best at room temperature.
- The following products **should not** be stored in the BioFresh compartment: cold-sensitive vegetables such as cucumber, peppers, aubergines, avocados, semi-ripe tomatoes, beans, courgettes and all cold-sensitive tropical fruits.

## Storage

of food in the BioFresh compartment:

### Dry setting

butter	up to	30 days
cheese, soft	up to	30 days
milk, fresh	up to	7 days
sausage, cold cuts	up to	7 days
fish	up to	4 days
shellfish	up to	3 days
poultry	up to	5 days
pork		
large portions	up to	7 days
cut up	up to	5 days
beef	up to	7 days
game	up to	7 days

### Humid setting

#### Vegetables, salad

artichokes	up to	21 days
asparagus	up to	14 days
broccoli	up to	14 days
Brussels sprouts	up to	30 days
cabbage	up to	180 days
carrots	up to	150 days
cauliflower	up to	21 days
celery	up to	30 days
chicory	up to	30 days
Chinese cabbage	up to	14 days
curly kale	up to	14 days
fennel	up to	21 days
garlic	up to	180 days
green onions	up to	7 days
herbs	up to	30 days
iceberg salad, endives,		
lamb's lettuce	up to	21 days
kohlrabi	up to	14 days
leeks	up to	60 days
lettuce	up to	10 days
mushrooms	up to	7 days
peas	up to	10 days
radicchio	up to	21 days
radishes	up to	14 days
savoy cabbage	up to	60 days
spinach	up to	7 days

#### Fruit

apples	up to	180 days
apricots	up to	14 days
bilberries	up to	14 days
blackberries	up to	8 days
cherries	up to	14 days
black and red		
currants	up to	21 days
dates (fresh)	up to	60 days
figs (fresh)	up to	7 days
gooseberries	up to	21 days
grapes	up to	90 days
kiwi fruits	up to	120 days
peaches	up to	30 days
pears	up to	120 days
plums	up to	21 days
quinces	up to	90 days
raspberries	up to	5 days
rhubarb	up to	21 days
strawberries	up to	5 days

## SuperFrost

The **fresh** food should be frozen to the core as rapidly as possible and already stored frozen food will be provided with a "cold reserve". This is provided by the SuperFrost facility and ensures that the nutritional value, appearance and flavour of the food remain intact.

- The maximum amount of fresh food which can be frozen in 24 hours is shown on the type plate "Freezing capacity ... kg/24h", fig. **A3**, pos. ④. This amount varies according to the model and climate rating.

### Freezing with SuperFrost

- Press SuperFrost button ④ briefly, so that it is lit. The freezer temperature will decrease and the appliance will switch to the lowest temperature.
- With a small quantity of food to be frozen, wait/pre-freeze for approx. 6 hours - normally sufficient, for maximum quantity see type plate under freezing capacity, approx. 24 hours.
- Then place the fresh food inside the freezer, preferably in the bottom drawers.  
If freezing the **maximum** quantity of food, do not use the drawers; instead, place the wrapped food directly on the floor of the freezer compartment. Once the food is frozen you can load it into the drawers.
- The SuperFrost function switches off **automatically**. Depending on the quantity of food placed in the freezer, this will normally be between 30 and max. 65 hours. The freezing process is complete - the **SuperFrost button is unlit** - the appliance is working in energy-saving normal mode again.

SuperFrost



**Note:** You should **not** switch on the SuperFrost function:

- when placing frozen food in the freezer;
- when freezing up to approx. 2 kg fresh food daily.

### Notes on freezing and storage

- **Items suitable for freezing:** meat, game, poultry, fresh fish, vegetables, fruit, dairy products, bread, baked goods, pre-cooked meals.  
**Not suitable:** lettuce, radishes, grapes, whole apples and pears, fatty meat.
- **Pack frozen food** in standard freezer bags or re-usable plastic, metal or aluminium containers.
- Do not allow fresh food which is to be frozen to come into contact with food already frozen. Always keep packs dry in order to avoid them sticking together.
- Always write the date and contents on the pack and do not exceed the stated storage time for the food. This prevents any risk of quality impairment.
- Pack food which you are freezing yourself in quantities appropriate to your household. To ensure that the food freezes right through quickly, the following quantities should not be exceeded per package:
  - fruit, vegetables up to 1 kg
  - meat: up to 2.5 kg.
- Do not freeze bottles and cans with carbonated drinks. They may burst. Drinks can be cooled down quickly, but take the bottles out of the freezer compartment after an hour at the most.
- **Storage:** Each drawer and shelf can take up to max. 25 kg frozen food .
- **VarioSpace:** By removing the drawer and the storage tray, you obtain the storage space for bulky goods equivalent to two drawer heights. Poultry, meat, large game pieces and tall baked goods can be frozen whole and further prepared in one piece.

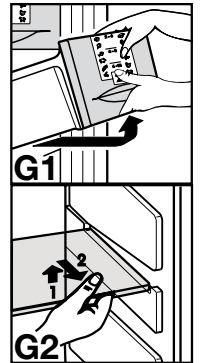
- If you want to use the maximum net capacity, you can remove the drawers and store items directly on the shelves. This will enable you to make use of the entire volume of the compartment.
- **Removing drawers**, fig. **G1**: Pull forward until the drawer stops and lift out.
- **Removing storage tray**, fig. **G2**: Lift storage tray up at front and pull out.  
To insert: Proceed in reverse order, simply push storage tray in as far as it will go.

- Always store identical food items together to avoid the door being open for unnecessarily long periods and to save energy.
- Do not exceed storage times given.

- **Thawing:** Only take out as much food as is immediately required for thawing. Cook food which has been thawed as quickly as possible.

Frozen food can be thawed in the following ways:

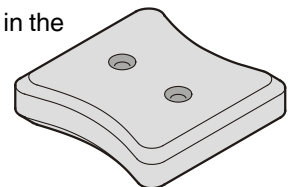
- in a conventional or fan oven
- in a microwave oven
- at room temperature
- in the refrigerator: the cold given off by the frozen food is used for cooling the other food.



### Cold-storage accumulators\*

These prevent the temperature in the freezer from rising too quickly in the event of a power failure, thus preserving the quality of the food.

- To ensure maximum storage time in the event of a power failure, place the **frozen** cold-storage accumulators in the top freezer drawer on top of the food.



## Defrosting

### The refrigerator and BioFresh compartment

defrost automatically. The defrost water is evaporated by the heat from the compressor.

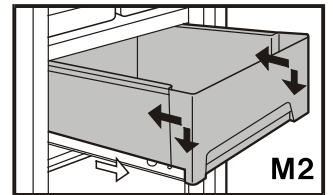
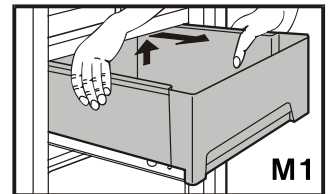
### The freezer compartment

after the appliance has been in operation for some time, a layer of ice will form if the door is opened and fresh food placed inside the freezer regularly. This is completely normal. However, a thick layer of ice will increase the appliance's energy consumption. You should therefore defrost the appliance regularly:

- Switch „Superfrost“ on one day before defrosting. The frozen goods are provided with a „cold reserve“.
- To defrost, disconnect the appliance from the mains or press the freezer on/off button so that the temperature display goes out. If the display does not go out, the child-proof lock is activated.
- If possible, put the frozen goods in the freezer drawer with the cold-storage accumulators on top, wrap in newspaper or a blanket and store in a cool place.
- To speed up the defrosting process put a saucepan of hot but not boiling water on one of the shelves.  
**Do not use electric heaters or steam cleaners, defrosting sprays or naked flames for defrosting nor any metal objects for removing the ice. Risk of injury and damage!**
- Leave the door of the appliance open while defrosting. Soak up the defrost water in the recess in the floor with a sponge or cloth. Then clean the appliance and wipe dry.

## Cleaning

- **Before cleaning, always switch off the appliance. Disconnect from the mains or unscrew or remove the fuse.**
- Clean the inside and equipment by hand with lukewarm water and a little detergent.  
**Because of the risk of injury and damage to the appliance, steam cleaning equipment should not be used.**
- Clean the side panels and door surfaces with a clean and soft cloth. If necessary, use a moist cloth (water + detergent). Alternatively, use a micro-fibre cloth.
- Do not use scouring/abrasive sponges, concentrated cleaning agents and cleaning or chemical solutions containing sand, chloride or acids; they damage the surfaces and can cause corrosion.
- Do not allow cleaning water to run down the drain gully or to penetrate the ventilation grilles or electrical components. Dry the appliance.
- Do not damage or remove the type plate on the inside of the appliance - it is important for the customer service department.
- To clean the **BioFresh drawers**, pull the drawers right out, grip at back and lift out, fig. **M1**.
- To re-insert: place the drawers on the extended rails - the rails must be aligned with the front of the drawer - and slide in, fig. **M2**.
- The dust should be removed from the **refrigeration unit** and heat exchanger - metal grid at the back of the appliance - once a year. Dust deposits increase energy consumption.
- Ensure that none of the wires or other components are dislodged, bent or damaged.



If the appliance is to be **left switched off for any length of time**, empty the appliance, disconnect from the mains, clean as described above and leave the door open so as to avoid odours.

## Troubleshooting

You may be able to rectify the following faults by checking the possible causes yourself:

### appliance does not work, display is unlit

- Is the appliance switched on properly?
- Is the mains plug properly inserted in the socket?
- Is the socket fuse intact?

### The interior light does not come on

- Is the refrigerator compartment switched on?
- Has the door been open for more than 15 minutes?
- The bulb is defective. Change the bulb as described in "Interior light".

### Loud running noise

- Is the appliance standing firmly on the floor, or does the compressor cause nearby items of furniture or objects to vibrate? If necessary, move the appliance slightly, align by adjusting the adjustable feet, or move bottles and containers apart.
- The following are normal: **flow noises**, bubbling or dripping noises, they come from the refrigerant flowing in the refrigerant circuit.

A short **clicking sound**: This will be heard whenever the refrigeration unit (the motor) switches on or off automatically.

**Motor noise**: This will be slightly louder for a brief period when the refrigeration unit switches on.

### The compressor will continue to run for a while

- On energy saving models, this is caused by the functions and is perfectly normal. When less refrigeration is required, the VCC compressor switches to a low speed. It will then be running almost constantly, but it does save energy.

### Temperature is not low enough

- Have you put too much fresh food into the freezer **without** activating SuperFrost? (See "SuperFrost")
- Does the door close properly?
- Is the appliance sufficiently well ventilated? Clear ventilation grilles if necessary.
- Is the ambient temperature too hot? (See "Safety regulations")
- Has the appliance been opened too often or left open too long?
- If applicable, wait until the appliance reaches the required temperature itself.

### $nR$ appears in the display

- A power failure/interruption has occurred, proceed according to the section "Power failure- / FrostControl-display".

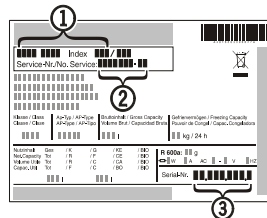
## Customer service and type plate

If none of the above causes apply and you cannot rectify the fault yourself, or if "F D" to "F 5" appears in the temperature display, this means that a fault has occurred. In this case, please contact your nearest service centre (see attached list). Inform the service centre of the **display** number, the

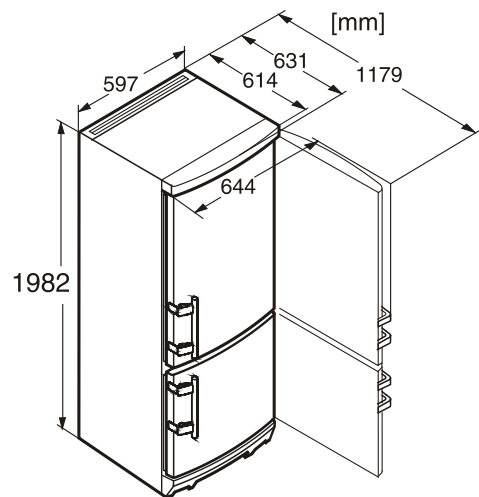
- type designation** ①
- service number** ② and
- appliance number** ③

of the type plate. This enables rapid, specific service. The type plate is located inside the appliance on the left-hand side.

Leave the appliance shut until the customer service engineer arrives so as to prevent any further cold loss.



The manufacturer is continually working on the continuous improvement of all types and models. We therefore hope for your understanding that we reserve the right to alter design, equipment and technology without notice.

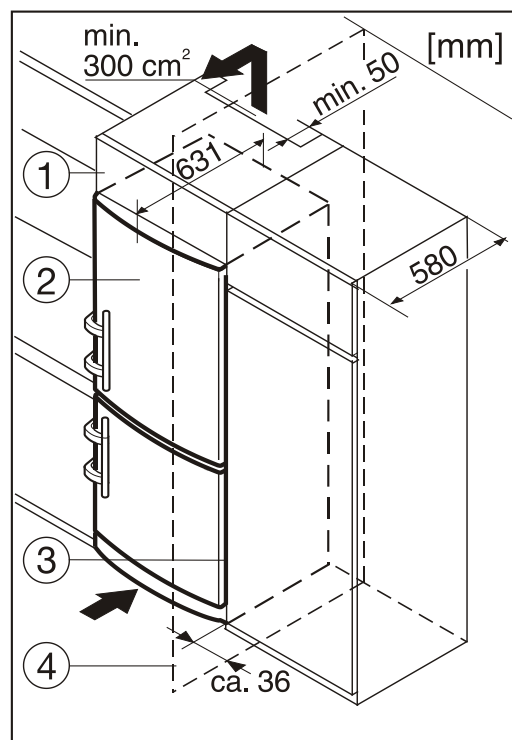


## Insertion into row of kitchen units

The appliance can be integrated into the kitchen units. To adapt the appliance to the height of the row of kitchen units, a suitable top cupboard can be fitted above the appliance ①. For ventilation and air extraction, an exhaust air shaft at least 50 mm deep must be provided on the rear of the top cupboard over the entire width of the cupboard. The ventilation cross-section below the ceiling of the room should be at least 300 cm<sup>2</sup>. Generally, the bigger the cross section, the more economically the appliance operates.

- When integrating with standard kitchen units (depth max. 580 mm) and decor panels of up to max. 2 mm thick, the appliance can be installed directly next to the kitchen unit. The door of the appliance protrudes beyond the front of the kitchen unit 34 mm at the side and 51 mm in the centre of the appliance. This allows it to be opened and closed easily.
- When installing the appliance next to a wall ④, a distance on the hinge side of min. 36 mm is required between the appliance and the wall (handle projection with door open).

- ① top cupboard
- ② refrigerator freezer
- ③ side of kitchen unit
- ④ wall



## Changing over door hinges

Only change over door hinges when mains plug is disconnected!

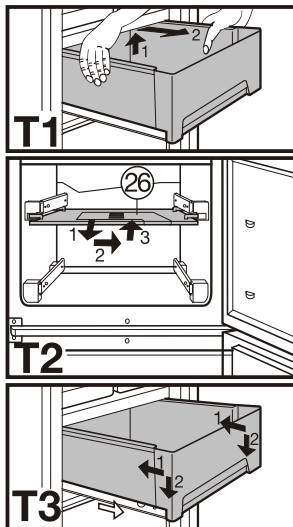
- With the door open, lever out plinth panel ① on the hinge side with a screwdriver and remove from front.
- Lever out cover ② with a screwdriver. Close door.
- Unscrew screw M5 ③.
- Pull hinge component ④ with hinge pin ⑤ out from underneath and remove.
- Open door, lift out at bottom and remove.
- Pull middle hinge pin ⑥ out from underneath.
- Tilt out top door and lift off from underneath.
- Transfer all hinge components onto the other side:
- Lift up cover ⑧ on handle side, push outwards; lift up cover on hinge side and pull off.
- Unscrew earthing plate ⑩: first earthing screw ⑩, then inner retaining screw ⑫.
- Unscrew hinge ⑨: first undo earthing screw ⑩, then retaining screws ⑫. Fit hinge ⑨ to opposite side: for easy assembly, fit hinge from above and first tighten with the upper retaining screw ⑫ M5, then screw ⑫ and finally earthing screw ⑩ M4.
- Turn earthing plate ⑩ through 180° and screw tight again on the new handle side: first retaining screw ⑫, then earthing screw ⑩.
- Insert hinge pin ⑦ in the other retaining hole. Use the hexagon socket on the open-ended spanner provided (spanner width 5).
- Fit covers ⑧ again: insert hinge-side cover by sliding outwards and click into position; insert handle-side cover by sliding inwards and click into position.
- Centre: Change over cover ⑩ with hinge ⑪: unscrew screws, lift off cover ⑩ and hinge ⑪ to the side, turn through 180° and replace on the other side, remove hinge bushing ⑬ and re-insert from top.

- Bottom: Using a screwdriver, remove the spacer ⑬ and replace on the other side.

### ● Moving the BioFresh drawers, fig. T1, 2, 3:

- Pull each drawer right out, grip at back and lift out, fig. T1
- Fig T2: Pull the drawer cover ⑳ out towards you and replace in the grooves so that it is offset towards the new handle side. Slide in until the support pins snap into place.
- Replace the drawers by placing on the fully extended guide rails - the rails must be aligned with the front of the drawer - and slide in, fig. T3.

The drawer and the cover must be flush with one another vertically.



- Re-attach the doors:
    - Remove plugs ⑭ from the door mounting points and replace on the other side.
    - Suspend top door in hinge pin ⑦ (with version I, do not lose spacer sleeve ⑨), close door.
    - Slide middle hinge pin ⑥ into the door mounting from below through the hinge ⑪. Make sure the door is flush with the body of the appliance; adjust if necessary using the slots on the hinge.
    - Suspend lower door, close.
    - Rotate hinge component ④ by 180°, remove hinge pin ⑤, turn by 180° and replace. Mount both parts in the hinge ⑮: slide the pin into the door mounting through the hinge, tilt in the hinge component, slide up and attach with screw ③.
    - Align the door **flush** with the body of the appliance using the slot on the hinge ⑮, then tighten screw ③.
    - Attach the plinth panel ① and click into place by pressing.
    - With the door open, insert the cover ② in the plinth panel at the front and click into place at the back.
    - Transfer\* **door handles** ⑬ and plugs ⑮. With the door open, carefully lift out the pressure plates\* ⑰ at the front and slide away; unscrew handle using a Torx® or Phillips screwdriver\*.
- Reassemble in reverse order: replace the pressure plates and click into position.

